

## 7. Problem: Tile fixing

The latest tendency is for tiles to substitute the rest of the floor and wall coatings. Presented below are some particular cases of applications, which can cause problems to the construction, if not tackled properly.

### FIXING NEW TILES ON OLD TILE LAYERS



1 The wrong choice of tiles has caused their damage. Thus, a new layer of tiles is necessary.



2 Firstly, the surface is cleaned of any dust, etc.



3 **ISOMAT AK 22** is gradually added into water under continuous stirring, until a uniform paste is formed. The mixture should be left for about 10 minutes to settle, before it is slightly stirred again. \*



4 The tile adhesive should be spread (combed) on the substrate with a notched trowel, in order to be uniformly applied on the whole surface.



5 Then, the tiles should be pressure-fixed at the desired position by keeping them stable and locating crosses for grouting.



6 The grout is spread onto the joints, using a rubber float in a diagonal direction to the joints, in order to fill them completely.



7 Finally, using a bubble level and a rubber hammer we make sure they are properly positioned.



8 After the surface becomes walkable, we grout the tiles either with **MULTIFILL 3-15**, enriched with resin **DS-99**, or with **MULTIFILL SMALTO 1-8**.



9 After the grout has absorbed enough quantity, the excess material should be wiped after a while, using a slightly wet sponge.



10 Finally, the surface may be cleaned with a slightly wet cloth after the tile grout has completely dried.



11 Fixing new tiles on old tiles becomes easy without having to remove the old tile layer.

\* **ISOMAT AK 25** can be used instead of **ISOMAT AK 22**.

#### PRODUCTS

- **ISOMAT AK 22** High performance, flexible, polymer-modified tile adhesive. Consumption: 1.5-4.0 kg/m<sup>2</sup>
- **ISOMAT AK 25** High performance, elastic, polymer-modified tile adhesive. Consumption: 1.5-4.0 kg/m<sup>2</sup>
- **MULTIFILL 3-15** Colored tile grout for joint width 3-15 mm
- **MULTIFILL SMALTO 1-8** Water-repellent tile grout of porcelain texture, for joint width 1-8 mm
- **DS-99** Additive for tile adhesives and joint grouts

## FIXING TILES ON WOOD AND GYPSUM BOARD



Fixing tiles on wood and gypsum board is a very common application today.



Firstly, the surface is cleaned of any dust and primed with **UNI-PRIMER**.



**ISOMAT AK-ELASTIC** is prepared by adding A-component to B-component under continuous stirring.\*



After **UNI-PRIMER** has dried, the tile adhesive is "combed" on the substrate with a notched trowel.



The tiles should then be pressure-fixed at the desired position.



Finally, using a bubble level and a rubber hammer we make sure they are properly leveled.



After the tile adhesive has dried, the tiles are grouted with **MULTIFILL SMALTO 1-8**.

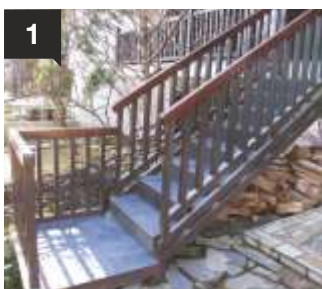


\* **ISOMAT AK 25** can be used instead of **ISOMAT AK-ELASTIC**.

### PRODUCTS

- **ISOMAT AK-ELASTIC** High performance, two-component elastic tile adhesive. Consumption: 1.5-4.0 kg/m<sup>2</sup>
- **ISOMAT AK 25** High performance, elastic, polymer-modified tile adhesive. Consumption: 1.5-4.0 kg/m<sup>2</sup>
- **MULTIFILL SMALTO 1-8** Water-repellent tile grout of porcelain texture, for joint width 1-8 mm
- **UNI-PRIMER** Acrylic water-based primer. Consumption: 0.1-0.2 kg/m<sup>2</sup>

## FIXING TILES ON METAL SURFACES



Metal surfaces comprise a difficult substrate for fixing tiles.



Firstly, the surface is cleaned of any dust, rust, etc.



**ISOMAT AK-ELASTIC** is prepared by adding A-component to B-component under continuous stirring.



The tile adhesive should be "combed" on the substrate with a notched trowel, so as to be uniformly applied on the surface.



The tiles should then be pressure-fixed at the desired position.



Finally, using a bubble level and a rubber hammer we make sure they are properly leveled.



After the tile adhesive has dried, the tiles are grouted with **MULTIFILL SMALTO 1-8**.



### PRODUCTS

- **ISOMAT AK-ELASTIC** High performance, two-component elastic tile adhesive. Consumption: 1.5-4.0 kg/m<sup>2</sup>
- **MULTIFILL SMALTO 1-8** Water-repellent tile grout of porcelain texture, for joint width 1-8 mm