

## 10. Problem: Surface protection

With a few simple and easy steps, the appearance and endurance of certain coatings (stones, marbles, painted surfaces, decorative coatings etc.) can be enhanced.

### WALL PROTECTION FROM GRAFFITI



**1**  
Before the application of **ISOMAT AG 80-2K**, the substrate is cleaned of any dust etc. **ISOMAT AG 77** can be used as well instead of **ISOMAT AG 80-2K**.



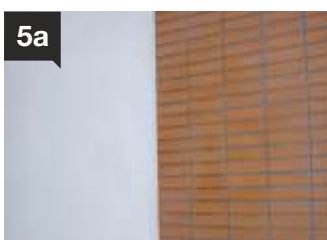
**2**  
The material is then applied in 2 layers. The second layer is applied after the first one has dried.



**3**  
Cleaning a surface from graffiti is easy, if it has been treated previously with **ISOMAT AG 80-2K**.



**4**  
The surface is cleaned by using hot water under pressure or rubbing with a sponge, soaked with **ISOMAT GRAFFITI REMOVER**.



**5a**  
After cleaning, the surface that was treated with **ISOMAT AG 80-2K** remains protected.

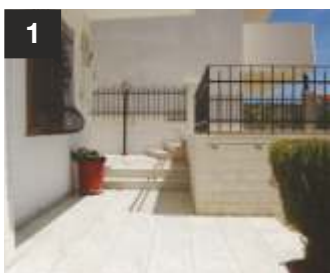


**5b**  
In case of using **ISOMAT AG 77**, the product has to be applied again in 1-2 layers.

#### PRODUCTS

- **ISOMAT AG 80-2K** Transparent varnish for protecting surfaces from graffiti. Consumption: 70-120 g/m<sup>2</sup> per layer, depending on the absorptivity of the substrate
- **ISOMAT AG 77** Anti-graffiti, protection emulsion. Consumption: 50-100 ml/m<sup>2</sup>, depending on the absorptivity of the surface
- **ISOMAT GRAFFITI REMOVER** Special cleaner for removing graffiti marks. Consumption: Depends on the graffiti type and the absorptivity of the surface

### PROTECTION OF UNPOLISHED MARBLES



**1**  
Stains that have impregnated into marbles are rather difficult to remove. Thus, proactive protection is critical in order to avoid such situations.



**2**  
**NANOPRO-M** is poured onto the cleaned surface and is applied with a squeegee. Alternatively, **PS-21** can be used instead of **NANOPRO-M**.



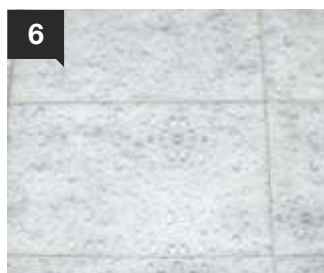
**3**  
The material is left to act for 5 minutes and then the excessive material is removed with a squeegee.



**4**  
Then the surface is cleaned with a slightly wet cloth.



**5**  
The final cleaning of the surface can be done after 6 hours.



**6**  
**NANOPRO-M** has impregnated into the pores of the marble without altering its appearance.

#### PRODUCTS

- **NANOPRO-M** Nano-impregnation for protecting marbles. Consumption: 50-70 ml/m<sup>2</sup>, depending on the absorptivity of the surface
- **PS-21** Siloxane-based solution without solvents for waterproofing. Consumption: 0.2-0.4 lit/m<sup>2</sup>, depending on the absorptivity of the surface

## PROTECTION OF WALLS MADE OF NATURAL OR ARTIFICIAL STONES

Waterproofing of walls, which are made of or are decorated with natural stones (shale, tufa, etc.) or coatings, prevents the appearance of white stains (salt) on them, while it also protects them from frost and pollution. Presented below are two different ways of dealing with the same problem:

1) Waterproofing with the transparent water-repellent impregnation **PS-20** and 2) waterproofing with the acrylic stone varnish **VS-1**.

### 1st Solution: Waterproofing surfaces with the transparent water-repellent solution PS-20



1

If altering the appearance of the surface is not desirable, then the ideal solution for its waterproofing is **PS-20**.



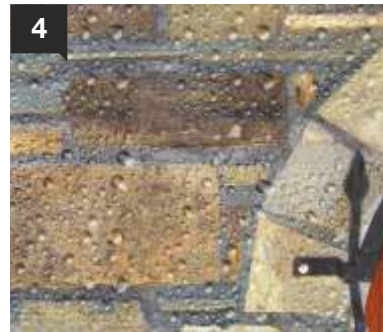
2

Firstly, the surface where **PS-20** is going to be applied, should be clean, dry and have open pores.



3

**PS-20** is applied with a brush, roller or spray in two layers. The second layer is applied once the first layer has completely dried.



4

**PS-20** impregnates into the pores of the surface and protects it from rain water absorption without altering its appearance. Alternatively, **NANOPRO-C** can be used instead of **PS-20**.

#### PRODUCTS

- **PS-20** Siloxane-based solution for waterproofing. Consumption: 0.2-0.4 lit/m<sup>2</sup>, depending on the absorptivity of the surface
- **NANOPRO-C** Nano-impregnation for protecting porous surfaces. Consumption: 100-200 ml/m<sup>2</sup>, depending on the absorptivity of the surface

### 2nd Solution: Brightening-up and protecting surfaces with the acrylic stone varnish VS-1



1

**VS-1** brings out the natural color of the material on which it is applied, protecting at the same time the surfaces from rainwater.



2

Firstly, the surface where **VS-1** is going to be applied should be clean, dry and have open pores.



3

**VS-1** is applied with a brush, roller or spray in two layers. The second layer is applied once the first layer has completely dried.



4

**VS-1** impregnates into the pores of the surface and simultaneously brightens up its natural color. Alternatively, **VARNISH-PU 2K** can be used instead of **VS-1**.

#### PRODUCTS

- **VS-1** Acrylic stone varnish. Consumption: 150-200 ml/m<sup>2</sup> per layer, depending on the absorptivity of the surface
- **VARNISH-PU 2K** Polyurethane, transparent two-component, protective varnish. Consumption: 70-120 g/m<sup>2</sup> per layer, depending on the absorptivity of the surface.