

6. Problem: Interior space renovation

The renovation of a room will probably include a range of repairs, from minor to large scale ones. Presented below are a few common, minor problems, which can be tackled fast and easily, as long as the appropriate materials have been chosen.

PUTTYING AND PAINTING OF SURFACES



1
Small imperfections on plaster (e.g. cracks, breaks) are very common and can be repaired relatively quickly.



2
Firstly, the surface is cleaned of any loose materials, etc.



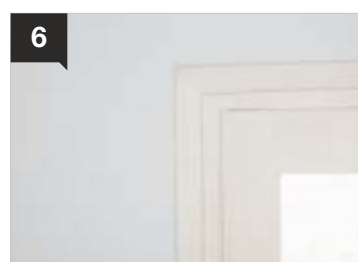
3
Subsequently, it is cleaned of any dust.



4
FAST-COVER is applied with a putty knife at the desired spot and is pressed to completely fill the gap.



5
The surface is smoothed out immediately with a putty knife.



6
After the repaired surface has dried (in approx. 30 minutes), it can be painted with **ISOMAT CLASSIC**.

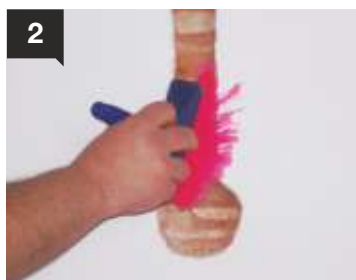
PRODUCTS

- **FAST-COVER** Ready-to-use, lightweight acrylic spackling putty
- **ISOMAT CLASSIC** High quality emulsion paint for interior use. Coverage: approx. 12 m² per liter, per layer

RELOCATION OF ELECTRICAL INSTALLATIONS



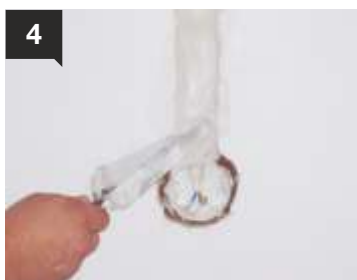
1
Changing use of a room, normally leads to the relocation of the electrical installations.



2
Firstly, the electric channel (path) is cleaned of any dust and the wire holder is placed.



3
Subsequently, the surface is slightly dampened.



4
The product used is **UNICRET-FAST**. Its preparation requires only the addition of water.



5
After the plaster has slightly dried (approx. after 45 minutes), it is rubbed with a sponge-faced float.



6
Finally, when the surface has dried (approx. after 3 hours), it can be painted with **ISOMAT CLASSIC**.

PRODUCTS

- **UNICRET-FAST** Fast-setting, white, repairing mortar. Consumption: approx. 14.7 kg/m²/cm of layer thickness
- **ISOMAT CLASSIC** High quality emulsion paint for interior use. Coverage: approx. 12 m² per liter, per layer

REPAIR OF OPENINGS IN WALLS



1 During the renovation of a space, the dismantlement of some old installations may be necessary.



2 Firstly, the surface is cleaned of any dust, etc.



3 Subsequently, the repaired area is primed, using the ready-to-use primer **PL-BOND**.



4 After the primer has dried, the bricks are built using **UNICRET** or **UNICRET-FAST**.



5 **UNICRET** or **UNICRET-FAST** is improved with **ADIPLAST** polymer latex.



6 The surface is dampened and the plaster is applied with a trowel.



7 After the plaster has slightly dried, it is rubbed with a sponge-faced float.



8 Once the plaster has fully dried, the surface is painted with **ISOMAT CLASSIC**.

PRODUCTS

- **UNICRET** Mortar for plastering and masonry. Consumption: approx. 15.5 kg/m²/cm of layer thickness
- **UNICRET-FAST** Fast-setting, white, repairing mortar. Consumption: approx. 14.7 kg/m²/cm of layer thickness
- **ISOMAT CLASSIC** High quality emulsion paint for interior use. Coverage: approx. 12 m² per liter, per layer
- **ADIPLAST** Polymer latex for multiple improvement of mortars
- **PL-BOND** Plaster adhesion primer. Consumption: 0.3-0.35 kg/m²

PUTTYING OF WALLS



1 The creation of smoothed surfaces in interior spaces is a very common demand in new buildings.



2 Firstly, the surface of the plaster is cleaned of any dust, etc. No priming or preparation using oil is needed before the application.



3 The content of **STUCCOCRET** is added to water under continuous stirring until a uniform mixture of the desired workability is formed. *



4 The mixture is applied with a putty knife in two layers. The second layer may be applied after the first one has dried (after 2-3 hours).



5 After the material has hardened (in approx. 12 hours), the surface is ground.



6 Finally, the surface is primed with **PRIMER CLASSIC** and painted with **ISOMAT CLASSIC**.

* **STUCCOCRET-PLUS** can be used instead of **STUCCOCRET**.

PRODUCTS

- **STUCCOCRET** Spatula putty. Consumption: approx. 1.1 kg/m²/mm of layer thickness
- **STUCCOCRET-PLUS** Polymer-modified spatula putty. Consumption: approx. 0.9 kg/m²/mm of layer thickness
- **ISOMAT CLASSIC** High quality emulsion paint for interior use. Coverage: approx. 12 m² per liter, per layer
- **PRIMER CLASSIC** Acrylic, micronized, water based primer. Coverage: 10-15 m² per liter, per layer